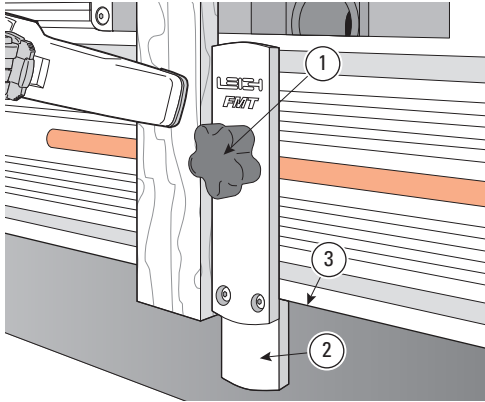


ATTENTION FMT Jig Owners.

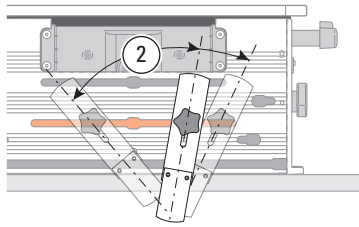
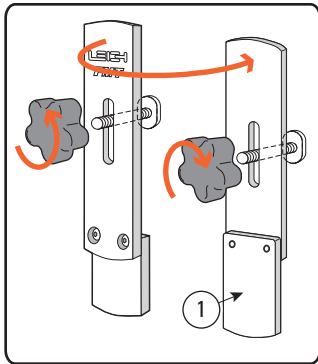
**New Side Stop Fence
 On The Leigh FMT**

This addendum supplements the FMT User Guide.



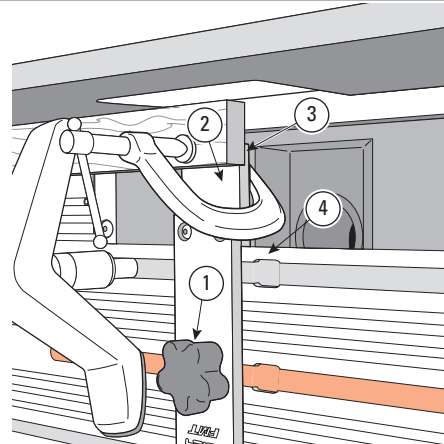
1 The FMT's newly designed side stop fence is attached in all modes by a single knob and T-bolt inserted to the **centre clamp plate slot** ①. Most tenon pieces are routed vertically, and for that purpose the short part of the fence ② acts as a T-square against the edge of the clamp plate ③. In this mode the Leigh logo faces toward you.

2 The side stop fence is set square at the factory, **but you should check your first test joints for squareness. You may need to adjust the side stop fence if your router bit alignment is not perfectly perpendicular to the table.** To adjust: slightly loosen the 'pivot' screw ① and the right hand 'lock' screw ② with the FMT hex driver. Adjust the angle ③. Retighten the screws and rout test joints to establish the correct setting by trial and error. Once locked in this position it should never require adjustment when used with that same router.

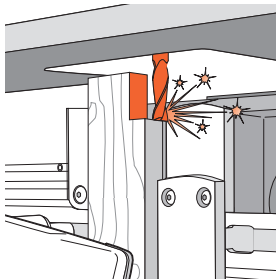


3 Angled Joints: Remove the knob and T-bolt. Reverse the fence so the short end faces toward you ①. The fence may now be set at any angle along the centre clamp plate slot ② by tightening the knob.

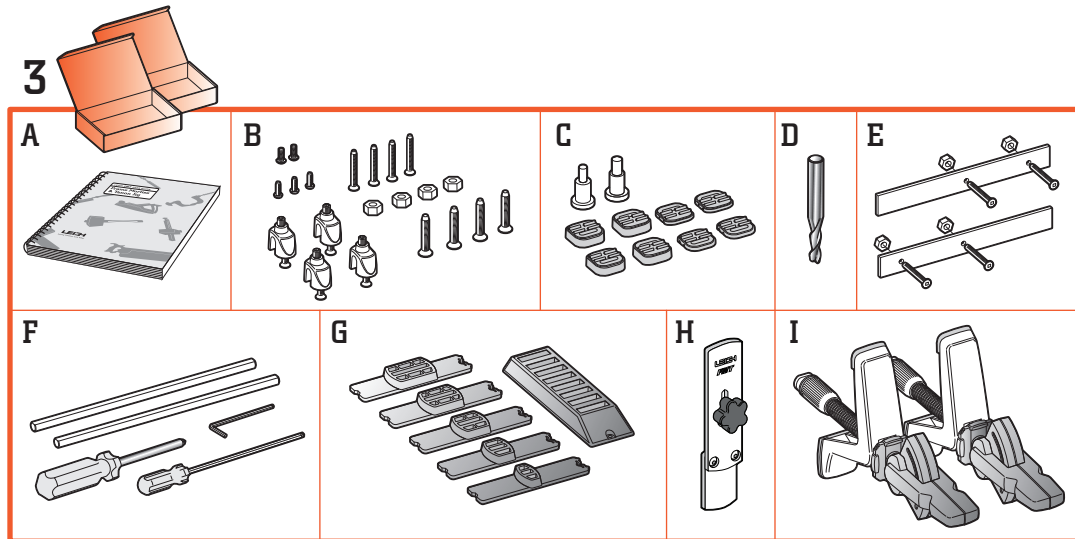
⚠ NOTE: Never rout tenons with the short part of the fence to the top, in the cutter opening.



4 The fence as a 'mortise steady': When routing mortises in small sectioned stock the router bit may cause the work piece to 'flutter' and cause poor joint fit and alignment. With the T-bolt back in its original position ①, the fence may be inverted with the short end up in the cutter opening ②. A suitable small clamp is used to hold the mortise piece against the face of the short fence ③ which is perfectly flush with the clamp plate face ④. **When routing mortises at the end of a board, always move the table as far as possible left or right to minimize the length of unsupported workpiece.** ■



⚠ WARNING: Never rout tenons with the side stop fence in the inverted position (with the short end up in the cutter opening). The inverted fence mode is only used to support small mortise stock.



Jig Assembly and Mounting

The Leigh FMT comes almost fully assembled with all adjustments factory set, but...

Before you start to set up your Leigh FMT Jig, make sure you have received all the required parts.

3. 2 Boxes containing:

- A 1 User Guide
- B 4 Jig Hold-down Nuts and Bolts 1/4"-20
- B 4 U-Posts with 4 set-screws and four 3/4" c/snk Screws
- B 4 1" c/snk Screws
- B 3 Hex Socket Button Head Screws 10x24 x 3/8"
- B 2 Hex Socket Button Head Screws M6
- C 4 High Shim Spacers
- C 4 Low Shim Spacers
- C 1 1/4" - 1/2" Centring Mandrel
- C 1 8-12mm Centring Mandrel
- D 1 5/16" HSS Spiral Upcut 1/2" shank
(not included with FMT-M)
- E 2 Outrigger Bars with 4 screws and nuts
- F 1 Leigh Square Drive Screwdriver
- F 1 Leigh 1/8" Hex Ball Screwdriver
- F 1 5/64" Hex Key
- F 2 Router Hold-down Rods
- G 5 5/16" guides (or 6x8mm with FMT-M) & 1 Guide stand
- NEW!** H 1 Side Stop Fence Assembly comprised of:
 - 1 Part 6166 Side Stop Fence
 - 1 Part 6171 Side Stop Squaring Block
 - 2 Part 6410 10-24x1/2" Hex Soc Button HD Cap Screw
 - 2 Part 6199 #10 Washer
 - 1 Part 6191 Side Stop T-Bolt
 - 1 Part 3080 Fence Knob
- I 2 Clamp assemblies